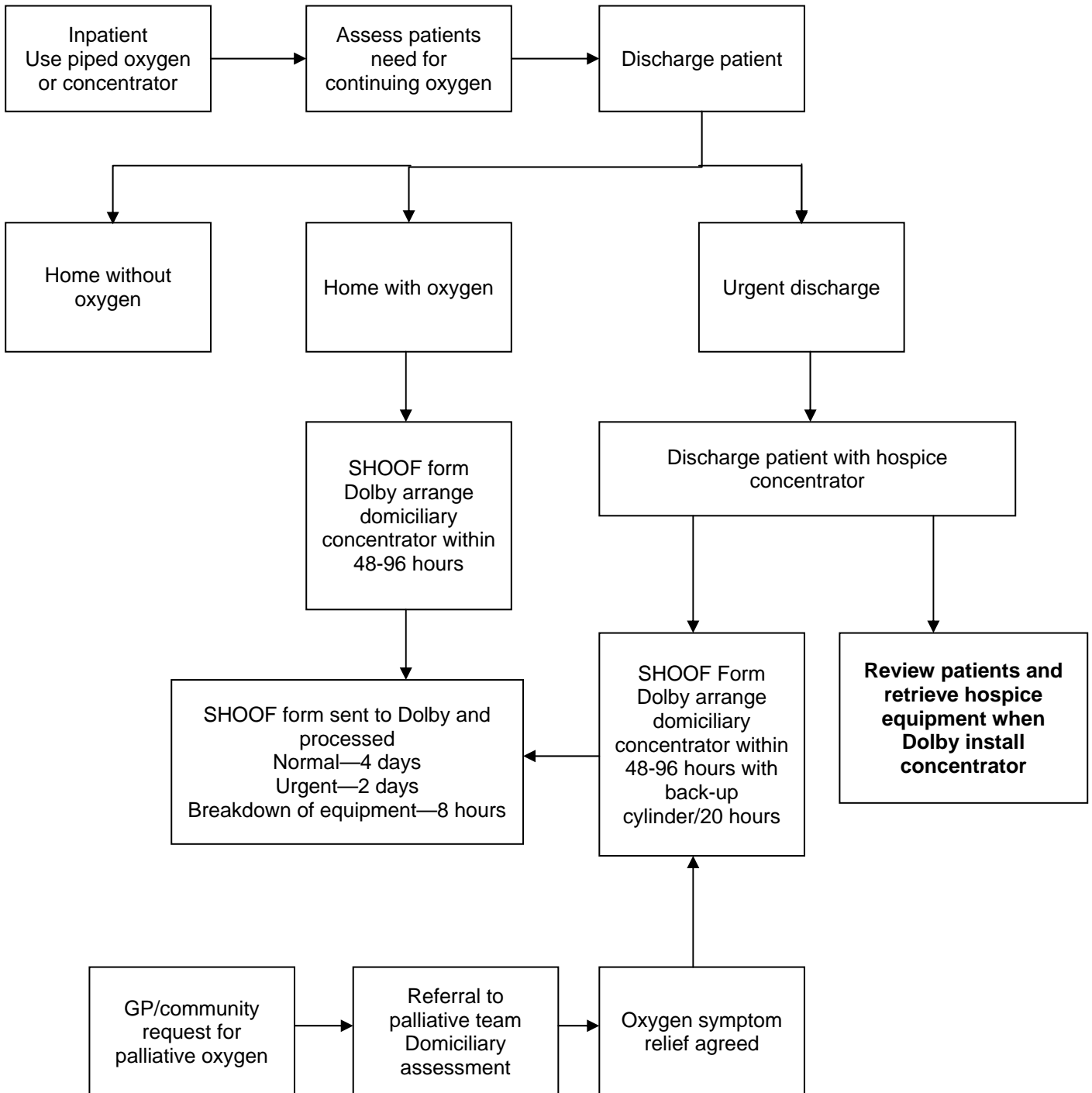


OXYGEN THERAPY PATHWAY

TERMINAL ILLNESS—PALLIATIVE CARE



St Columba's Hospice
 (interim arrangements while in temporary accommodation)
 Piped oxygen
 Back-up generators
 Concentrators x 5
 Back-up cylinders

Marie Curie Hospice
 Back-up generator
 Concentrators x 8
 Back-up cylinders