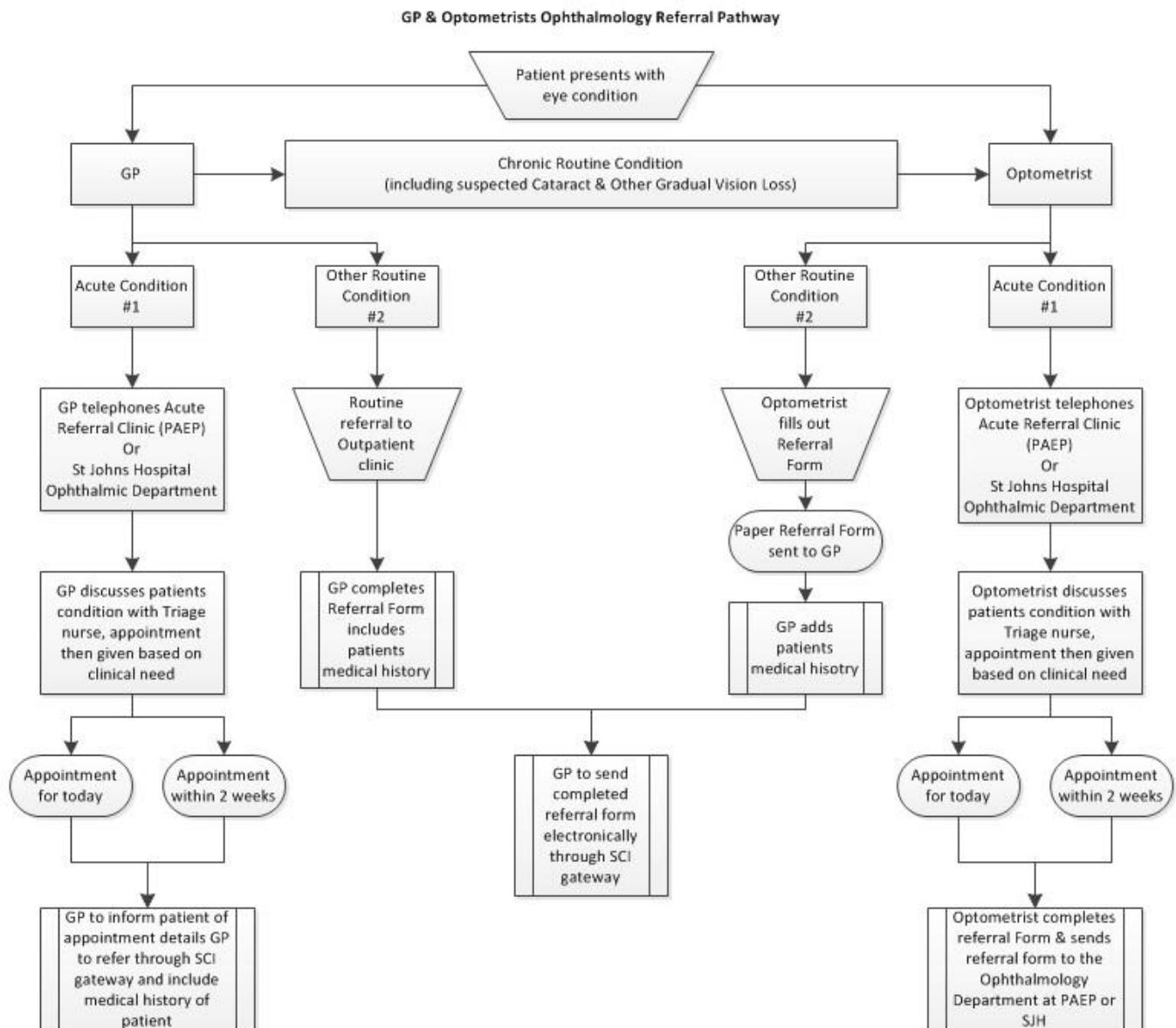


Ophthalmology – Lothian GP and Optometry Ophthalmology Referral Pathway



#1: Trauma, Acute Red Eye, Sudden Vision Loss, Significant Pain within past 72hrs or recent onset Diplopia

#2: Pathway excludes cataract referrals for 2nd eye which are to be made by an Optometrist using the 'Lothian Cataract Surgery Refractive Outcome reporting Form' directly with the hospital

ACUTE REFERRAL PAEP: MON – FRI 08.30 – 16.30 SJH: MON – FRI 09.00 – 17.00 CONTACT: PAEP: 0131 536 3751 SJH OD: 01506 524 286	ACUTE REFERRAL OUT OF HOURS CONTACT OPHTHALMOLOGY ON CALL TEAM: PAEP: 0131 242 1000 SJH OD: 0131 242 1000	ROUTINE OUTPATIENT REFERRAL CONTACT: PAEP: 0131 536 3753 SJH OD: 01506 524 286
---	--	---