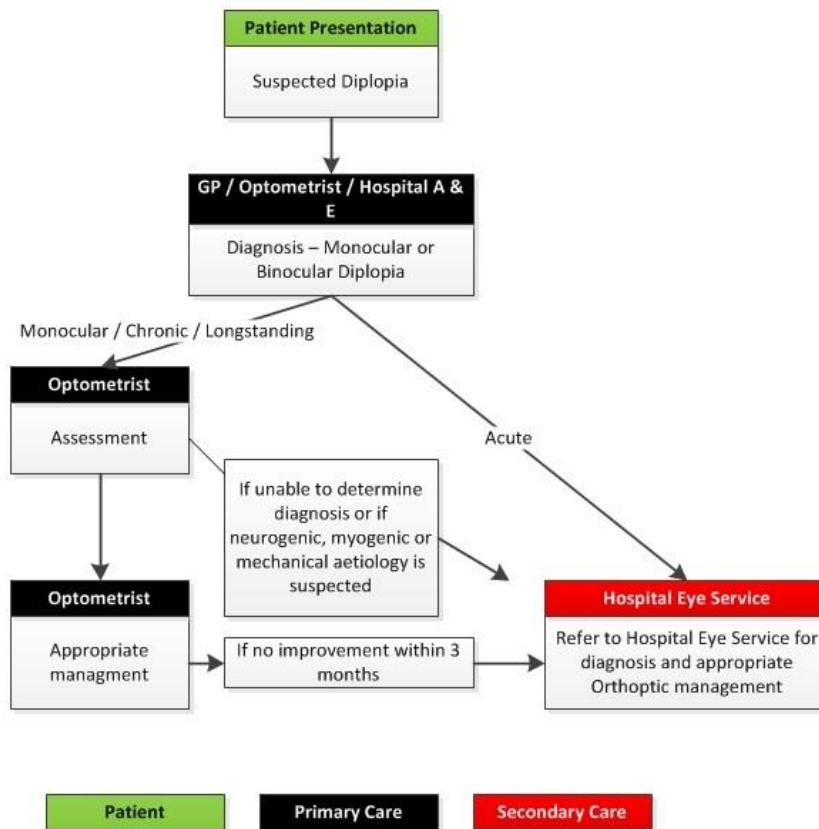


Ophthalmology Diplopia Patient Pathway

Ophthalmology – Diplopia Patient Pathway



Useful Information for Patients

NHS 24:
www.nhs.uk
www.doctoronline.nhs.uk
www.patient.co.uk

Guidance Notes

PRESENTATION:

Acute or sudden onset of diplopia, whether constant or intermittent, presenting within the last month.

Chronic or longstanding diplopia, most likely to be intermittent and present for longer than one month

COMMUNICATION:

Promote open communication between Hospital Eye Service orthoptists & community optometrists.