



Digital Dermatology Referral & Triage Pathway

Image Capture Guidance

Supplementing dermatology referrals with clear, accurate images allows for quicker access to specialist advice for you and your patients.

Begin by explaining the process to the patient and gaining their consent,

"I would like to take some photographs to include with your dermatology referral. The images or any personal information won't be stored on my device; they will be sent to a secure storage system through the PhotoSAF app. The images will form part of your healthcare record, and a dermatologist will review them to determine the next steps for your care. Are you happy to continue?"

Clean the area

Ensure the patient's skin around the skin concern is clean, dry and free of any cosmetics or topical medications.

Remove distractions

Remove any jewellery, clothing, or accessories that may obstruct the view of the skin concern.

Ensure no personal information is visible in the photos.

Use a plain background to make the skin concern stand out, consider using a white sheet or ask your patient to stand next to a plain wall.

Use natural light

If possible, take the photo in bright, natural light. This will help ensure the light is even and soft, avoiding harsh shadows.

Do not have the device facing towards a window or light.

Avoid flash using if possible- important details can be lost if the flash is too bright.

Focus and review

Tap on the skin concern on your screen to focus on the area to ensure it is sharp and clear.

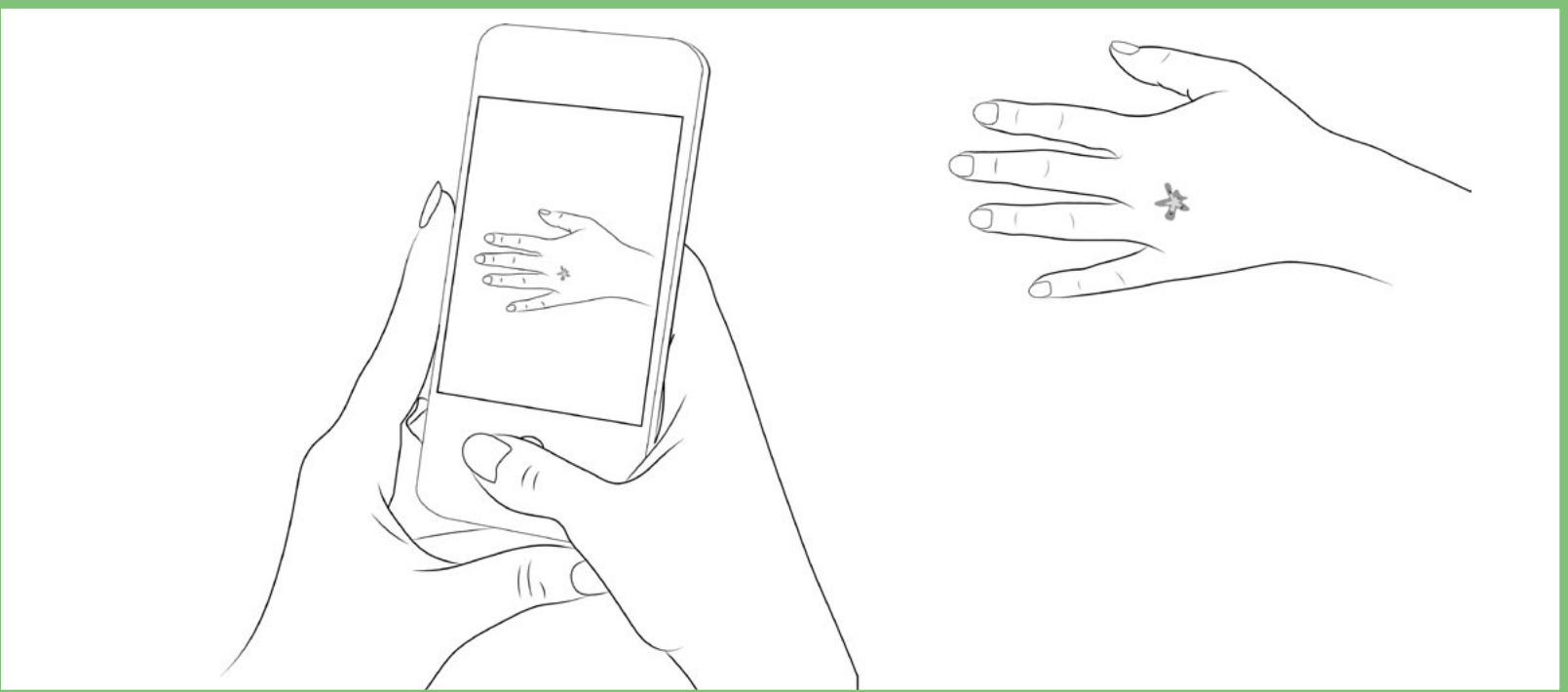
Please review the photos to ensure they are clear and in focus.

Delete any unnecessary or duplicate images.

Retake if necessary. An out of focus or dark image has no clinical value.

Establishing image

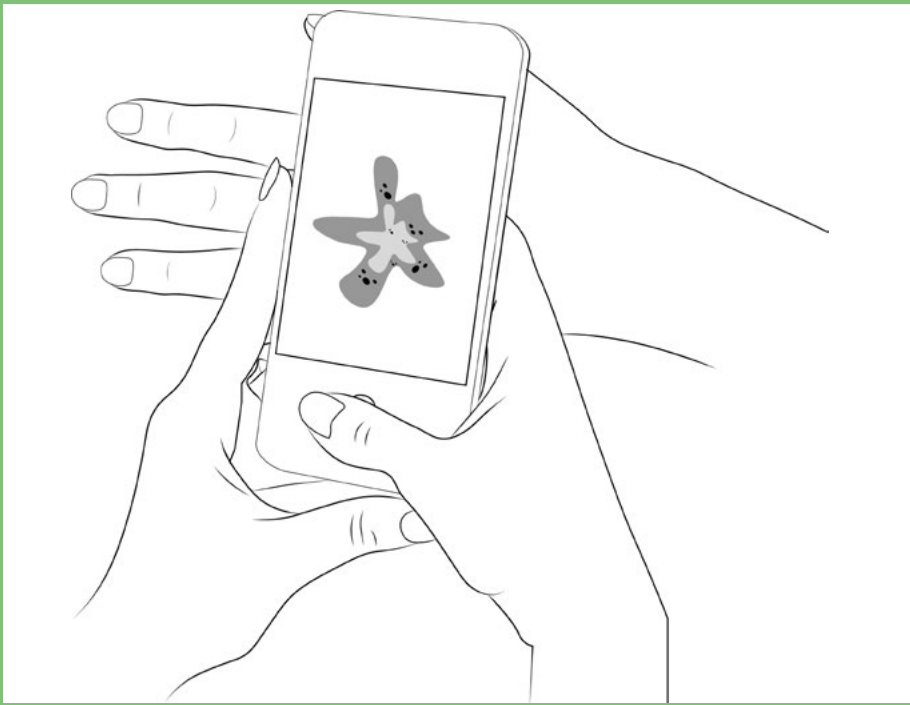
Your first image should clearly document the position of the skin concern on the body. Hold the phone perpendicular and around 30cm away from the patient to avoid distortion.



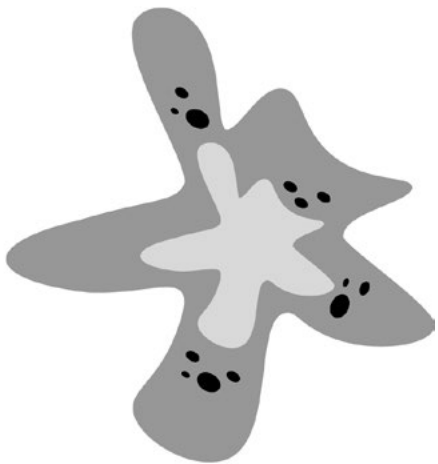
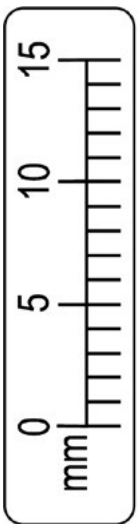
Close-up

Your next images should be close enough to capture the skin concern in detail. Putting the area of interest in the middle of the frame, move closer to the area of concern. Do not zoom.

Make sure the image is not blurry.



Consider using a scale:
If appropriate, place a ruler or measuring scale next to the skin concern to enable the dermatologist to accurately assess the size.



Additional Images

If the skin concern is raised, consider a third image taken from an angle to show the height.

Additional Dermoscopy Images

If you have a dermatoscope attachment for your device, attach this and take your dermoscopic image.