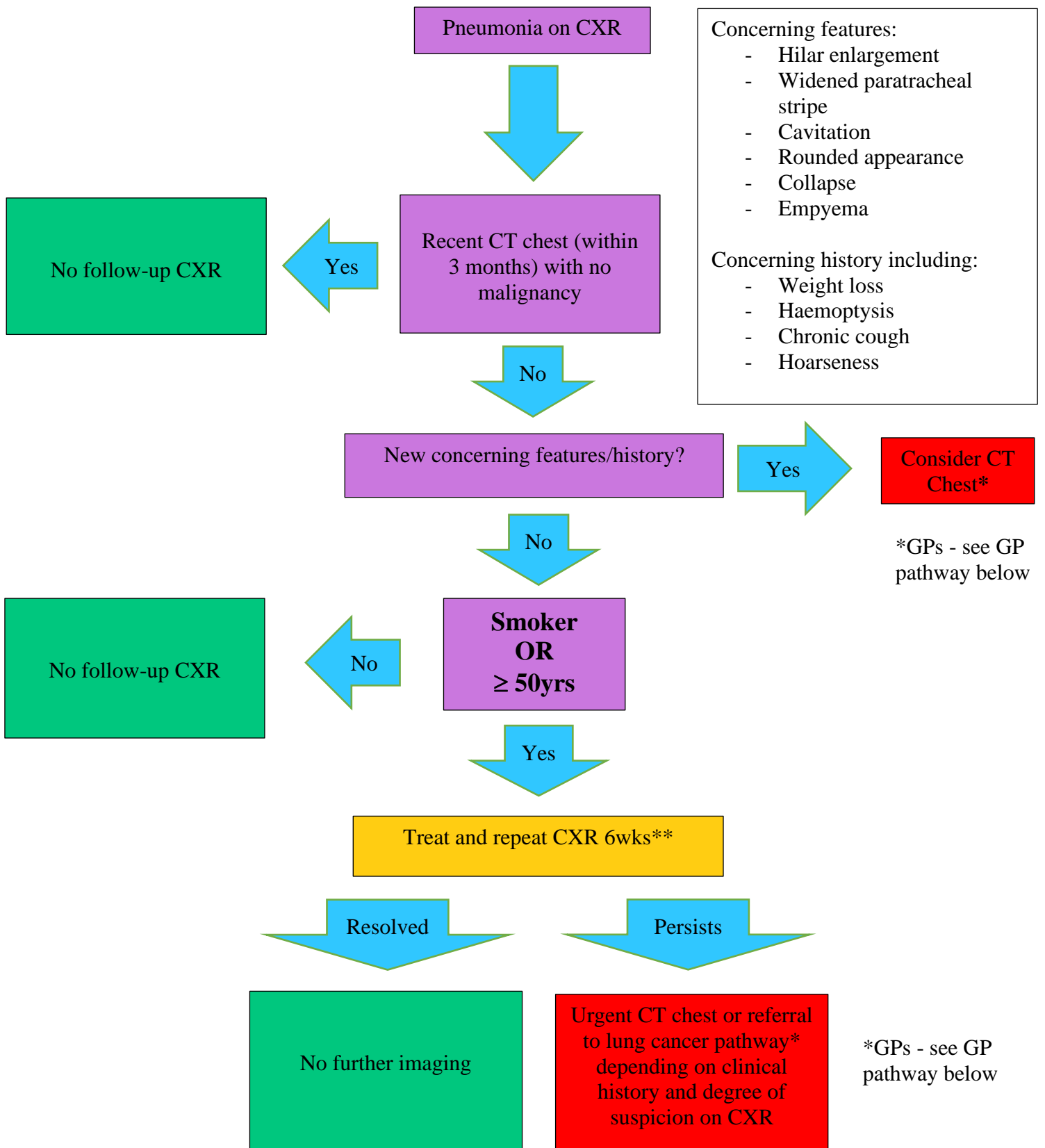


Edinburgh Adult Pneumonia Chest Xray Follow-up Guidelines



*GP Pathway – If there is concern regarding lung cancer, then please use the RIE/WGH/SJH lung cancer referral pathway (<https://apps.nhslothian.scot/refhelp/guidelines/respiratory/lungcancer>)

**When the patient’s initial abnormal film is taken in the emergency department (ED), AND the patient is subsequently discharged home from ED without admission, the ED clinician should email the clinical GP inbox and ask the GP to request the follow-up CXR.