



Clinical Infection Research Group  
Edinburgh

**ANNUAL REPORT**  
**AUGUST 2024-2025**

# CONTENTS

Abbreviations	3
2024 - 2025 Summary	4
Team Objectives	5
Active Studies	6
Study Metrics	13
Collaboratoins	14
Our Team	17
Education and Awards	20
Wider CIRG Network	22
GeoSentinal	23
Registry	24
Acknowledgments	25

# ABREVIATIONS

CIRG	Clinical Infection Research Group
RIDU	Regional Infectious Diseases Unit
ART	Anti-retroviral therapy
AMR	Antimicrobial Resistance
EID	Edinburgh Infectious Diseases
PI	Principal Investigator
NRS	NHS Research Scotland
NIHR	National Institute of Health Research
CRF	Clinical Research Facilities
RIE	Royal Infirmary Edinburgh
SJH	St John's Hospital
WGH	Western General Hospital

# SUMMARY OF THE YEAR

CIRG have had another successful year from August 2024 to 2025. We have taken on increasingly complex studies across different areas of clinical infection, collaborating closely with other research teams throughout Lothian, the UK and globally.

Research highlights include ongoing involvement in trials investigating and improving the management of staphylococcal bacteraemia, HIV, Hepatitis B and *Clostridium difficile* as well as investigating the efficacy of new vaccines. We continue to expand our involvement in surveillance studies of imported infectious diseases, respiratory viruses and fungal diseases as well as HIV.

A major focus this past year, due to the closure of the first floor of the Regional Infectious Diseases Unit, has been finding a new home for our clinical research area. We are delighted to be 're housed' in ward 22 in WGH alongside the new Commercial Research Delivery Centre. This bespoke area will allow us to continue to deliver our clinical research trials at a high standard.

Exciting collaborations this year detailed below include with those with the Anne Rowling Regenerative Neurology Clinic, the Edinburgh Centre for Homelessness and Inclusion Health, the Fleming Fund, the Roslin Institute and, for a public engagement project on AMR, with Charades Theatre Company.

Finally, this year, we bid farewell to Angus McCance, our Research Fellow for 2024-25, who is embarking on an exciting new chapter in New Zealand to further his medical career. We are thrilled to welcome Katy Roberts as our new Research Fellow. Katy joins us following the completion of her foundation years locally in Lothian.

In October 2024, we were also pleased to welcome Tallulah Armstrong as our Clinical Trials Assistant. Tallulah's experience working in pathology labs in Australia, combined with her laboratory and administrative skills, has already proven invaluable to our group. Our team has continued to show perseverance and adaptability through the challenges and triumphs of the last year and we look forward to working together as we push boundaries and break new ground into 2026



**Meghan Perry**  
CIRG Chair and PI



**Amy Shepherd**  
Chair and Lead Research Nurse

# TEAMS' OBJECTIVES

- Grow & develop research capacity within infection medicine specialities
- Maximise synergies between the NHS, academia and industries, fostering joint research with universities and companies within the UK and internationally
- Identify priority areas for research, building on existing strengths and future ambitions



# ACTIVE STUDIES

Clinical research plays a vital role in advancing medical knowledge, developing new treatments, and improving patient care across all medical specialties. As a group, CIRG is participating in a broad range of infectious disease studies, adapting to the needs of the medical community.

Since August 2024, we have been participating in 19 active studies, with a further 2 studies currently in set up and 8 more coming through the pipeline. Many of our active studies are currently still recruiting. Over the past year the study team has worked incredibly hard resulting in over 230 participants being recruited. This is a fantastic reflection on the team as many of the studies we participate in are investigational treatment studies with intense protocols for each participant to follow.

In the winter months, the team undertook the challenge of running two vaccine trials simultaneously. We successfully recruited over 140 healthy volunteers over the age of 50 to these studies. The implementation of our “volunteer for research” registry, which now has over 650 people, was extremely beneficial to our recruitment success.

immunisation  
public health  
parasite ethics  
prevention  
HIV dose escalation  
infection  
hepatitis vector  
transmission  
intervention outbreak  
host mAbs  
ebola epidemiology symptoms  
vaccines  
surveillance  
placebo communicable  
COVID-19 cohort  
bnAbs mortality  
cabotegravir  
protocol paxlovid  
randomisation  
blinded control  
analysis hypothesis  
antivirals  
review eradication  
pathogens  
immunisation  
public health  
parasite ethics  
prevention  
HIV dose escalation  
infection  
hepatitis vector  
transmission  
intervention outbreak  
host mAbs  
ebola epidemiology symptoms  
vaccines  
surveillance  
placebo communicable  
COVID-19 cohort  
bnAbs mortality  
cabotegravir  
protocol paxlovid  
randomisation  
blinded control  
analysis hypothesis  
antivirals  
review eradication  
pathogens 6

## VACCINE STUDIES

The Fluvent trial is being run, by Moderna, to establish if their investigational seasonal flu vaccine may be able to prevent seasonal flu for people 50 years of age or older. This trial is a Phase 3, randomised, double-blind, active-control, evidence-driven clinical trial. In this trial, Moderna will compare their mRNA based vaccine with the seasonal flu vaccine which is already approved for use and is the current standard practice to evaluate the safety and immune response

PI: Dr Rebecca Sutherland

Sponsor: Moderna

Status: Closed to Recruit



Norovirus, commonly known as the winter sickness bug, is one of the most common stomach bugs in the UK. It can spread easily and most cases are often in care homes and schools. And there is currently no vaccine licenced for use against norovirus. The Nova 301 Trial is a Phase 3, randomised, double-blind clinical trial, run by Moderna, looking at the efficacy of their vaccine to protect people against the symptoms of Norovirus. The study aims to evaluate efficacy and safety of the vaccine in a larger study population.

PI: Dr Oliver Koch

Sponsor: Moderna

Status: Closed to Recruit



## OBSERVATIONAL STUDIES

Cascade is a mixed methods observational study exploring the management of the current HIV epidemic in Europe; collecting important insights from HIV sero converter cohorts. The main aim is to explore viral and host characteristics, measure the outcomes of individuals who have recently acquired HIV 1 in Europe, and to understand their experiences and needs.

PI: Dr Claire Mackintosh

Sponsor: UCL

Status: Open



CORAL is a non-interventional study to characterise the real-world implementation, roll out, safety and patient experience of the long-acting injectable HIV treatment regimen of 2-monthly cabotegravir and rilpivirine.

PI: Dr Daniel Clutterbuck

Sponsor: UCL

Status: Open



The EuroSIDA study is a prospective observational cohort study of more than 22,000 patients followed in 100 hospitals in 35 European countries plus Israel and Argentina. The main objective of the study is to follow the long-term clinical prognosis for the general population of HIV-infected patients living in Europe and to assess the impact of anti-retroviral drugs on the long-term prognosis for these patients. The EuroSIDA study was initiated in 1994 and continues to expand in multiple ways. Being an observational study, the type of data collected has diversified tremendously since the start, as advances in the medical management of HIV have allowed HIV-infected patients to foresee a good life prognosis. The EuroSIDA study has published more than 270 peer-reviewed publications, based on EuroSIDA only data and in collaborations with others.

PI: Dr Claire Mackintosh  
Sponsor: Chip  
Status: Closed to Recruit



GeoSentinel is an international network of clinics and healthcare providers dedicated to monitoring infectious diseases and other travel-related health issues among international travelers and migrants which have the potential to have a global impact. It also aims to support the advances of the fields of travel medicine, tropical medicine and general infectious diseases. Additionally, it provides important information to keep public health authorities up to date on the epidemiology and clinical presentation of key travel-related illnesses, which can help to mitigate the spread of disease.

PI: Dr Oliver Koch  
Status: Open



id.DRIVE is a non-interventional multi-country, multi-centre, hospital-based surveillance study of viral respiratory pathogens in adults hospitalised for SARI. The study is designed to monitor the burden of disease of multiple viral respiratory pathogens and to study preparedness for future impact and effectiveness studies.

The study aims to characterise adult SARI patients both generally and by respiratory pathogen as well as investigating the impacts of co-infection to help give a picture of the SARI landscape within hospitals. The hope is that this can give further understanding to hospitalised SARI trends around the world.

PI: Dr Oliver Koch  
Sponsor: P95 Epidemiology & Pharmacovigilance BV  
Status: Open



The PrEPaRe study, part of the RESPOND network, is an observational study collecting individual data on people newly diagnosed with HIV, who report having used Pre exposure prophylaxis ( PrEP ).

The aim of the study is to assess the use of PrEP among people newly diagnosed with HIV, to understand the circumstances under which these HIV infections occurred, and to estimate the prevalence of HIV drug resistance. Data will be collected from clinics across Europe assisting and providing care/monitoring for people newly diagnosed with HIV with the baseline visit within 3 months from the date of diagnosis.

PI: Dr Daniel Clutterbuck

Sponsor: Respond

Status: Open

# PrEPaRe



MISTRAL is a study aiming to assess the influence of the microbiome on HIV vaccine response. An observational study, requiring the collection of microbiome related clinical data, as well as blood and stool samples, which aims to use 1,000 individuals established in EuroSIDA sites.

These participants will provide samples at their baseline visit and additionally 10-24 months after their initial visit. Samples will be used to conduct pre specified analyses into microbiome and immunological related factors, as well as forming the basis of an ongoing research biobank for future exploration of the impact on microbiome on clinical outcomes in people living with HIV/AIDS.

PI: Dr Claire Mackintosh

Sponsor: Chip

Status: Closed to Recruitment



## MISTRAL



SBIVA is a clinical study designed to compare the benefits of a 7-day versus the standard 14-day course of intravenous antibiotics in patients with bronchiectasis. The study has been endorsed by an expert patient panel and is supported by the Asthma UK–British Lung Foundation Alliance. Findings will be widely disseminated to inform clinical practice and influence healthcare policy.

The primary outcome is the time from initiation of intravenous antibiotics to the need for a subsequent course due to a protocol-defined exacerbation of bronchiectasis, measured up to one year post-randomisation. The study uses the internationally accepted definition of a bronchiectasis exacerbation.

CIRG are supporting the Bronchiectasis Research team with this study.

PI: Dr Ruzanna Frangulyan

Sponsor: Accord

Status: Open

# SBIVA



UKAR (UK Antimicrobial registry) aims to answer a broad set of research questions around novel anti-microbial agents. It would allow the description of the use of such novel agents throughout the UK and to quantify the clinical outcomes and safety profile associated with their use in a real-world setting.

PI: Dr Simon Dewar  
Sponsor: University of Aberdeen  
Status: Open



## DIAGNOSTIC STUDIES

MIDAS is a pragmatic, open randomised, controlled trial. Due to current insensitive diagnostic methods, with a need for reducing broad spectrum antibiotic use, MIDAS aims to assess the utility of a rapid test using fast multiplex real time Polymerase Chain Reaction assays for 26 respiratory bacteria and viruses to personalise antibiotic treatment. This assay is called "MICAP".

The primary objective is to explore whether participants admitted with lower respiratory tract infection can safely receive personalised antibiotic therapy within 12 hours of consent for this test, using an existing sputum samples.

PI: Dr Kate Templeton  
Sponsor: Accord  
Status: Closed to Recruit

## MIDAS-RTI



## INVESTIGATIONAL STUDIES

This is a Phase 3 trial testing the drug bepirovirsen to see if it effectively treats chronic HBV (hepatitis B virus) infection. Participants will receive either bepirovirsen (300 mg weekly for 24 weeks with 2 initial higher doses) or a placebo. The study will track the drug's effectiveness, safety, how it moves through the body, and how long it keeps working.

PI: Dr Jenni Crane  
Sponsor: GSK  
Status: Closed to Recruit

## B-WELL 1



AiCuris is running this trial to investigate the safety and effectiveness of using Pritelivir for the treatment of acyclovir resistant Herpes Simplex Virus (HSV) infections. The treatment is compared with intravenous foscarnet, cidofovir or topical imiquimod, whichever is the clinician's standard of care. Pritelivir will be given orally on day 1 followed by a lower dose per day for a maximum of 42 days.

PI: Dr Meghan Perry  
Sponsor: AiCuris  
Status: Closed to Recruit

## PRIOH-1



Chronic Pulmonary Aspergillosis (CPA) is a potentially long-term, life-threatening infection of the lungs caused by a fungus known as Aspergillus. This study aims to investigate Rezafungin as a treatment for patients aged 18 years and over with CPA who have limited other treatment options available. The study hopes to evaluate whether 6 months of Rezafungin treatment is effective and safe in these patients according to clinical and radiological response as measured by the St George's Respiratory Questionnaire, weight, and CT imaging.

PI: Dr Ian Page

Sponsor: Mundipharma

Status: Open to Recruit

## REZAFUNGIN CPA - MR907-2502



The RECOVERY trial is the world's largest clinical trial into treatments for COVID-19. It was founded by UK research and Innovation (UKRI)'s Medical Research Council (MRC) and the NIHR. RECOVERY has now evolved to identify treatments that may be beneficial for people hospitalised with suspected, or confirmed, flu or community acquired pneumonia.

PI: Dr Oliver Koch

Sponsor: University of Oxford

Status: Open

RECOVERY  
Randomised Evaluation of COVID-19 Therapy



Clostridioides difficile Infection (CDI) is one of the most common healthcare-associated infections. Once a patient suffers a CDI recurrence, the likelihood of a second is approximately 40%, increasing thereafter and the proportion of patients who respond to treatment declines with multiple recurrences. This is a randomized, double-blind trial to learn more about whether a medication called VE303; developed by Vedanta Biosciences Inc; is safe and effective in preventing recurring CDI.

PI: Dr Meghan Perry

Sponsor: Vedanta

Status: Open

RESTORATIVE303  
PHASE 3 STUDY FOR PREVENTION OF RECURRENT CDI



The RIO Trial is a randomised, placebo-controlled study evaluating whether a novel therapy—ART combined with dual long-acting broadly neutralising antibodies (bNAbs)—can achieve sustained viral suppression in people with early-stage HIV after stopping ART. The control group receives ART plus placebo. Eligible participants have either: confirmed primary HIV infection who initiated ART within six months of diagnosis, or chronic HIV infection diagnosed before a CD4 count decline below 500 cells/mm<sup>3</sup>, who have maintained uninterrupted, suppressive ART for at least 12 months. Our team collaborated with Prof. Juergen HAAS and Prof. David Dockrells' laboratories (IRR, University of Edinburgh) to perform sample processing in a Category 3 laboratory.

PI: Dr Rebecca Sutherland

Sponsor: Imperial College London

Status: Closed to Recruit



Imperial College  
London

Funded by: Bill & Melinda Gates Foundation

Coordinated by: Imperial College London,  
The University of Oxford  
The Rockefeller University

SNAP aims to improve treatment outcomes for patients with Staphylococcus aureus bloodstream (SAB) infections. SAB is a common and severe infection with a 90-day mortality of 15-3% (mortality lower in children but up to 5%) despite current best available therapies. Using an adaptive platform trial, SNAP is able to simultaneously address multiple questions in the management of SAB: different intravenous therapies, adjudicative treatments, and timing of the IV to oral switch. This trial is a first of its kind in that it is recruiting adults, paediatrics, and youth with sites worldwide.

PI: Dr Rebecca Sutherland

Sponsor: University of Melbourne (Globally)

Status: Open



THE UNIVERSITY OF  
MELBOURNE

UCL

Funded in UK by: National Institute for Health and Care Research (NIHR) Health Technology Assessment Programme

Sponsored in UK by: Imperial College London,

STRIVE is a multi-centre, open-label dose-escalation Phase 1/2 first-in-human study in HLA-A\*02:01-positive adults with chronic HIV infection, who are virologically suppressed, & on ART. It will be run in collaboration with the phase I accredited Edinburgh CRF. The study will evaluate the safety, tolerability, PK, and anti-HIV activity of single and multiple doses of IMC-M113V. IMC-M113V is an immune-mobilising monoclonal T cell receptor against viruses (ImmTAV®), a new class of bi-specific protein therapeutic designed to deliver targeted elimination of HIV reservoirs in individuals with chronic HIV infection. STRIVE will be divided into Part 1 and Part 2 to evaluate single-ascending and multiple-ascending dose schedules, respectively.

PI: Matt Adam

Sponsor: Immunocore

Status: Open



IMMUNOCORE

To contact CIRG, for study involvement or collaboration, please email:

**[loth.CIRG@nhs.scot](mailto:loth.CIRG@nhs.scot)**

We look forward to hearing from you.

**CiRG** Clinical Infection  
Research Group  
Edinburgh

# STUDY METRICS

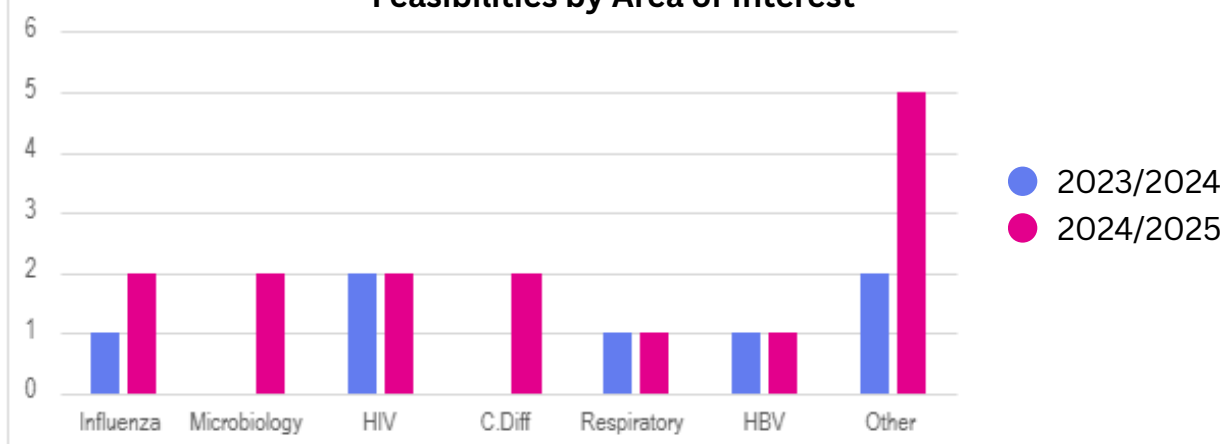
Over the last few years, we have seen a shift in the Infectious diseases research focus. After the pandemic it was natural that a lot of the focus remained on COVID-19 treatments, prevention and impact. However, we are starting to see COVID research give way to a more varied portfolio.

This trend can be seen not only in the studies we have worked on this year but also in the type of study feasibilities we have received. There has been a clear increase in the number of studies we have been approached to take part in, particularly in the latter part of the year. This is encouraging going forwards, especially in light of the current global landscape.

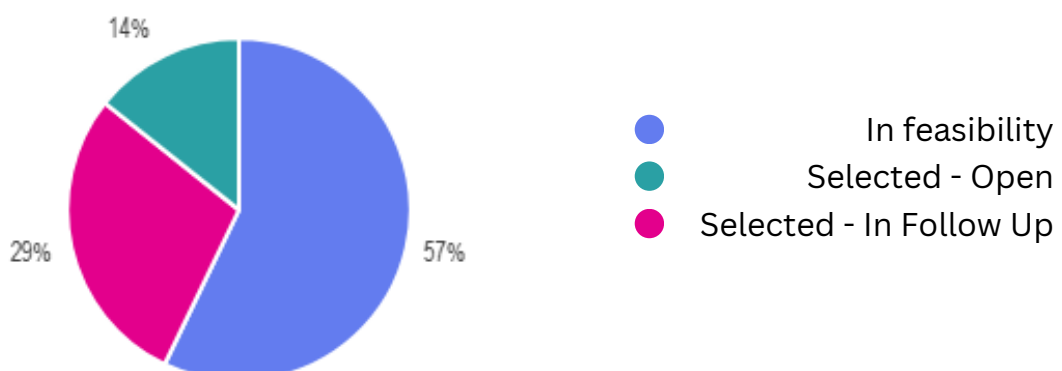
We have also observed that there is a broader range of diseases areas being investigated in the studies we are being approached about. For example, in the bar chart below, the “other” category includes studies with a focus on Urinary Tract Infections (UTIs) and travel related illness, among others. This indicates that research interest is expanding across the infectious diseases field.

At CIRG we have always had a significant HIV research portfolio, and we continue to build on this as HIV research continues to advance.

**Feasibilities by Area of Interest**



**Feasibilities Progression**



Simon Dewar and Oliver Koch from CIRG, as well as other NHS Lothian colleagues Pota Kalima, Martin McHugh, Robyn Campbell, Espe Palenzuela and Katharine Relph are partnering with UoE Infectious Diseases in providing mentorship to Fleming fund fellows from Uganda, Kenya, Malawi and Zambia. The Uganda and Zambia fellows visited Edinburgh Nov 24, Kenya and Malawi fellows visited Jan 25. As part of this, the wider Lothian team hosted workshops in antimicrobial stewardship and infection diagnostics - thanks to everyone who helped with this. Oliver Koch also touched base with some of the fellows at ESCMID conference in Vienna.

The fellows are continuing in their individual beneficial projects as well as country collaborative projects, and early results should be available later this year. Some of the Lothian mentors will also be travelling to Nairobi this November for a fellowship workshop.



[Find out more](#)

CIRG PI and Chair Meghan Perry is a named investigator on an MRC funded grant "Investigating the Multi-scale Dynamics and Drivers of Antimicrobial Resistance in One Health Systems of China and the UK", collaborating with amongst others Dr Bram van Bunnik, Dr Bryan Wee, Dr Stella Mazeri and Professor Ross Fitzgerald to answer key questions relating to transmission of Antimicrobial resistance (AMR) between different ecological niches. She also continues to collaborate with Department of Health and Social Care and Charades Theatre Company on an AMR public engagement project in the form of a musical now called "Lifeline" that was performed off Broadway in September 2024

[Find out more](#)

Looking forward to the coming year we are excited to be working with the Anne Rowling Clinic on a new Epstein Barr virus (EBV) vaccine study they have in the pipeline.

The Anne Rowling Regenerative Neurology Clinic is an integrated care-research facility at the University of Edinburgh. Their work is dedicated to improving quality of life for people living with neurological conditions including MS, MND, Parkinson's and early onset dementias, through drug trials and working closely with the researchers at the university.

The Horizon project is a Moderna vaccine trial for people with Multiple Sclerosis. The CIRG team will be assisting the clinic as the unblinded team who will administer the vaccine to the participants. We are proud that our experience in vaccine trials has been recognised as a valuable asset to their team. We are also excited for the opportunity to work on a trial out with our usual portfolio.



[Find out more](#)

## CENTRE FOR HOMELESSNESS AND INCLUSION HEALTH

CIRG PI Claire Mackintosh is an Associate member of the University of Edinburgh Centre for Homelessness and Inclusion Health where she sits on the steering committee and the research sub-committee. She collaborates with Professor Sarah Johnsen in the University of Edinburgh Centre for Homelessness and Inclusion Health and Professor Helen Eborall at The Usher Institute in work focussed on homelessness and secondary care: identifying service gaps and recommending solutions for an extremely vulnerable, multimorbid population. She also works with Professor Richard Lowrie on evaluation of the Cyrenians hospital in-reach programme.

[Find out more](#)



THE UNIVERSITY  
of EDINBURGH

At CIRG, we collaborate with other research teams across NHS Lothian to deliver a wide range of trials and studies for the benefit of our patients as well as the advancement in medical care.

We have a close working relationship with the Bronchiectasis Research team based at the Royal Infirmary Edinburgh (RIE). This partnership has enabled us to recruit to studies such as SNAP, id.Drive across multiple sites, expanding our reach within Lothian. In return we happy to be able to support them with some of their studies, for example Midas and SBIVA.

Due to the scale of the id.Drive study, the CIRG team has also partnered with the EMERGE teams at both the RIE and St John's Hospital to increase capacity for recruitment. These collaborations have been vital in facilitating efficient and coordinated patient screening and recruitment across all three sites.

We want to thank all our partners for their hard work and dedication and for the support we have received in delivering these trials.

We would also like to thank the OPAT clinic, the travel clinic and the infectious diseases clinic team who are very supportive of our work and help us to deliver our trials.



# CIRG TRIALS TEAM



**Louise Sharp**  
Senior Research Nurse



**Amy Shepherd**  
Lead Research Nurse



**Susie Ferguson**  
Senior Research Nurse



**Jacqueline Henderson**  
Senior Research Nurse



**Anne Saunderson**  
Senior Research Nurse



**Connor Dalby**  
Clinical Trials Assistant



**Angus McCance**  
Clinical Research Fellow



**Tallulah Armstrong**  
Clinical Trials Assistant

[Find out more about our team](#)

# CIRG PIS



**Dr Claire Mackintosh**  
Associate Medical Director  
Medicine WGH



**Dr Dáire O'Shea**  
Clinical Director RIDU



**Dr Dan Clutterbuck**



**Dr Iain Page**



**Dr Ian Laurenson**



**Dr Kate Templeton**



**Dr Matt Adam**



**Dr Meghan Perry**  
CIRG Chair



**Dr Naomi Bulteel**



**Dr Oliver Koch**  
NRS Clinician



**Dr Rebecca Sutherland**  
NRS Clinician



**Dr Simon Dewar**



**Dr Sarah Clifford**



**Prof David Dockrell**

[Find out more about our team](#)

# NRS CLINICIAN SESSIONS

The NRS Clinician Sessions provide funded time for clinicians to engage in research and broaden their research portfolio. This time can be used to plan and conduct research, write grants, and disseminate research findings. These sessions were developed in association with NHS Research and Development, to enable clinicians to pursue their research interests.

In 2024-2025, Dr Koch and Dr Sutherland continued to utilise their NRS sessions to contribute to a number of trials across a range of disease areas.

## Dr Oliver Koch

Dr. Koch specializes in tropical infections and travel medicine. In 2024/25, he dedicated his NRS sessions to advancing global surveillance studies, including GeoSentinel— a global network monitoring trends in travel-related illnesses—and id.Drive, which focuses on viral respiratory pathogens. He has also been PI for a norovirus vaccine trial, NOVA, and contributed to RECOVERY, one of the largest clinical trials investigating treatments for respiratory illnesses, initiated during the COVID-19 pandemic.



## Dr Rebecca Sutherland

Dr. Sutherland's research interest focuses on optimising the treatment and prevention of infection. She leads the SNAP trial in NHS Lothian, a global platform study investigating optimal management strategies for *Staphylococcus aureus* bacteraemia (SAB). She also runs vaccine studies in NHS Lothian for seasonal flu (FLUENT), pandemic flu (ODYSSEY) and Covid (NextCOVE). In addition to this she is local PI for RIO which explores a novel HIV therapy, based on neutralising antibodies, to achieve long term suppression of HIV infection. Her NRS sessions have been dedicated to supporting these trials within NHS Lothian.



“ I have really enjoyed this placement with the infectious disease research team, I have felt extremely supported and valued and I am excited to take my learning here into my future career! ”

“ As a student, I have learnt the process of conducting clinical research, the steps of gaining ethical approval, read protocols and criteria, spent time in the laboratory processing samples and observed patient visits. “

“ This spoke experience has further strengthened my interest in research nursing. It was inspiring to see the diversity of the team's remit and the integral role of research in improving patient care. It also gave me a broader appreciation of how evidence is generated, and how this informs and transforms frontline clinical practice. “

CIRG is proud to continue offering student placements within research – an experience which provides student nurses with a unique insight into the world of clinical research. In the past, clinical research has not been a focus in the nursing education system but through the development of the Clinical Research Placement Hub, has encouraged greater discussion around the role of research nurses.

The team has had a very positive experience working with students from the University of Edinburgh and Edinburgh Napier. It has been interesting to meet each of the students who each have their individual interests and experiences.

The hub and spoke model have allowed the CIRG team to use their connections to tailor the students experience to their interests. This approach has helped them to gain a deeper appreciation for the range of roles available within clinical research and ensures they get the most out of their time with the team.

Our team, led by senior research nurse Louise Sharp, aim to show the future generations of nurses the impact a research nurse can have on the future of clinical practice and providing more clarity about what it means to be a clinical research nurse.

The CIRG is dedicated to fostering a supportive environment for research, while also enhancing research training and educational opportunities for staff. This commitment not only aids in the progression of individual research careers but also integrates a culture of clinical research into everyday practice.

The CIRG has established various pathways and initiatives, including the CIRG Funding Awards, which are currently open for applications and have previously sponsored conference attendees, as well as contributing to the purchase of equipment in the clinical area of the RIDU.

CIRG awards began 2023 and have since supported 26 infectious diseases staff to attend both UK and international conferences and support publication fees for infection projects. In 2025 CIRG have supported attendance at 10 conferences and 2 publications.

## Publications supported

Open Forum Infectious Diseases

MAJOR ARTICLE

Addressing the Health Needs of People Who Inject Drugs: A Descriptive Analysis of an Inpatient Integrated Care Team Within an Acute Hospital in Scotland

Alexandria Chung,<sup>1,2</sup> Katya Johnson,<sup>2,3</sup> Bethany Mulvey,<sup>2</sup> and Claire L. Mackintosh<sup>1</sup>

<sup>1</sup>Clinical Infection Research Group, Regional Infectious Diseases Unit, National Health Service Lothian, Edinburgh, UK, <sup>2</sup>University of Edinburgh Medical School, University of Edinburgh, Edinburgh, UK, and <sup>3</sup>Emergency Medicine Department, National Health Service Lothian, Edinburgh, UK

BMJ Public Health

Original research

Secondary care for people experiencing homelessness in Scotland: a retrospective cohort study

ina CT Gordon<sup>1</sup>,<sup>2</sup> Haris Haseeb,<sup>2,3</sup> Sarah Johnsen<sup>1</sup>,<sup>4</sup> Claire Mackintosh<sup>5</sup>

## Conference success



Claire Evans, HIV Specialist Nurse, won runner-up in the Oral Presentation awards at the annual National HIV Nurses Association conference in Leeds. Claire presented a case study on "Individualised care: listening, support and building relationships". Congratulations Claire !

To apply to the CIRG AWARD FUND, available for any related Infectious Disease research, including international conferences,

Click [here](#)

For information on the application process, or to contact the team, please email:

[loth.cirg@nhs.scot](mailto:loth.cirg@nhs.scot)

# AWARDS

# WIDER CIRG NETWORK

## UoE Collaboration

Working with the University to bring clinical and academic together in research

## Conference Presentations

CIRG members have been presenting posters, giving oral presentations and chairing sessions at a range of conferences over the past year

## Volunteer Research Registry Development

Enabling direct contact with those who want to get involved in research

## Multi-team Collaboration

Working with other teams to expand our reach and improve patient care

## PI Meetings

CIRG's monthly PI meeting enables PI's to understand all studies within CIRG, and provides opportunities to present new studies

## Publications

CIRG is fostering a culture of collaborative publishing and is proud to celebrate these publicly across social platforms and in sponsoring presentations at conferences

## Student Placements

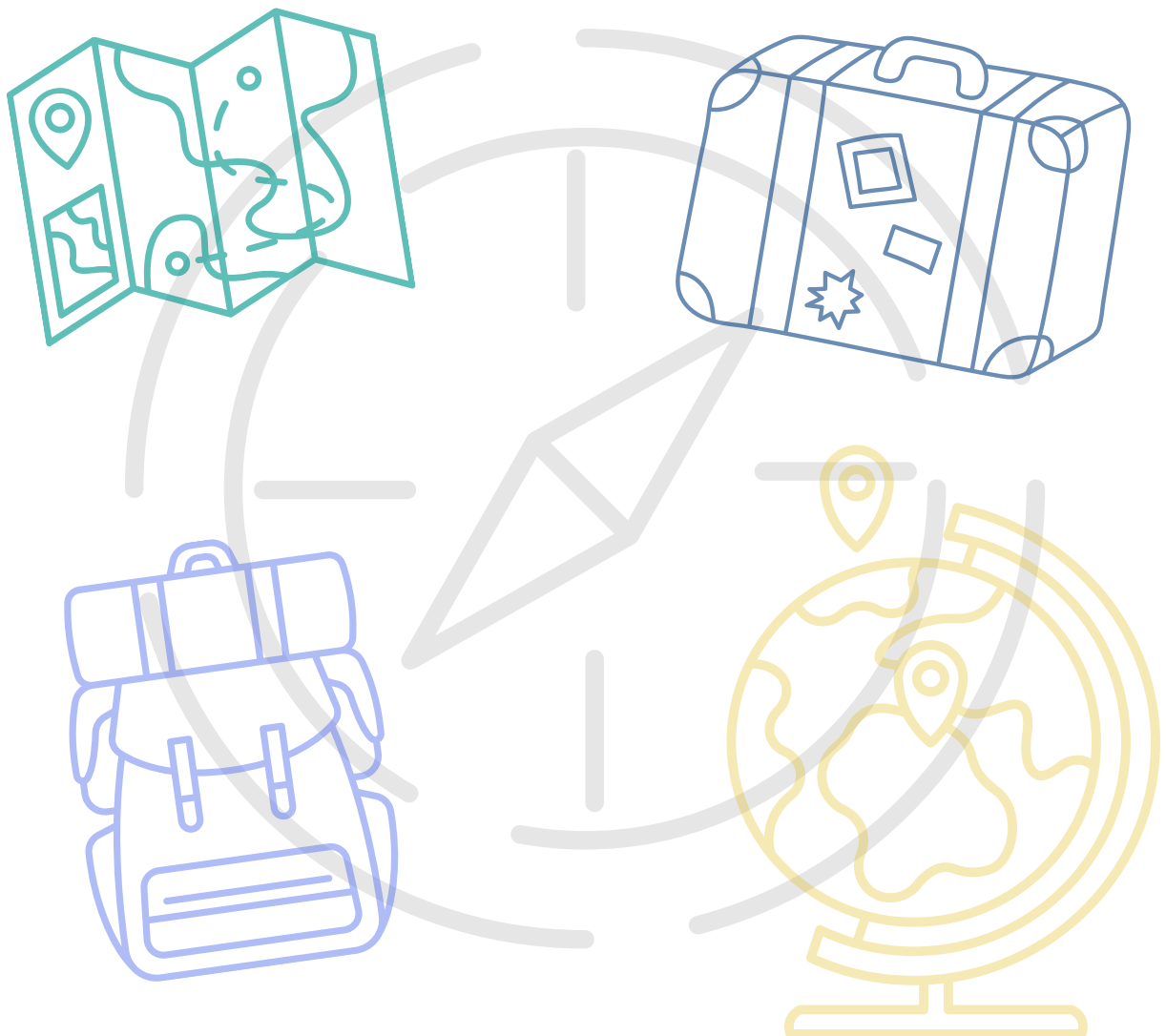
CIRG is a research based placement hub for student nurses

## Research in Progress Meetings

CIRG members attend the Friday lunchtime talks in RIDU to give an update on the teams studies

# GEOSENTINEL SURVEILLANCE STUDY

Earlier this year, CIRG became part of the GeoSentinel Network. This network is a worldwide platform monitoring travel-related illness, tropical medicine and infectious diseases around the world and aims to identify trends within these areas of medicine around the world. GeoSentinel hopes the information gathered, such as clinical outcome, associated risk factors, can help to gain a better understanding of the epidemiology as well as the impact of different travel related illnesses. This knowledge can then be used to inform and guide the policies surrounding travel-related illness management.



# OUR RESEARCH REGISTRY

**willing to  
volunteer  
for  
research?**

**NHS**  
Lothian

CIRG facilitates research studies for a range of common UK infections **think: flu, COVID**

**Many studies require volunteers, aged 18-99:**  
testing interventions & vaccines, sharing experience, and more!

Some studies offer **financial compensation**

**Ready to be involved?**  
**Contact CIRG at:**  
**loth.CIRGregister@nhs.scot**

**CIRG** Clinical Infection Research Group Edinburgh

**learn more:**  
**[www.cirg-edinburgh.co.uk](http://www.cirg-edinburgh.co.uk)**

Our research Registry continued to grow through 2024/2025, with now over 650 volunteers signed up and ready to take part in research. The registry was set up so that members of the public could express their interest in being involved in clinical research. This registry has proven very useful to the team when recruiting to two of our vaccine studies requiring “healthy\*” participants. The registry allowed the stratification of basic health data, such as age, to efficiently identify potential appropriate volunteers.

\* “Healthy” within clinical research is “an individual who participates in research studies and does not have the condition, or disease, being studied”

The entire CIRG team would like to extend our sincere gratitude to all participants who have generously volunteered to take part in our research. Their commitment and enthusiasm are fundamental to the success of our studies, and without their involvement, these studies would not be possible.

We also wish to express our appreciation to everyone who contributes to making our research happen—from those who provide funding and design the trials, to those who facilitate and support participant engagement. Research is a collaborative effort that demands significant time and dedication, and we are deeply thankful for the continued support of the many teams working alongside us. Their contributions are vital to driving forward the healthcare advancements we hope to achieve.



Clinical Infection Research Group  
Edinburgh

[cirg-edinburgh.co.uk](mailto:cirg-edinburgh.co.uk)@CIRGEdinburgh